

FLOOR FRAMING



DIETRICH
METAL FRAMING
A Worthington Industries Company

Floor Joist Systems/Components

Light-Gauge C-Joist Framing (CS/TS-Series)	118-119
TradeReady® Steel Joists (TDJ and TDW Series).....	120-121
TradeReady® Grommet (TDGR)	121
TradeReady® Rim (TD-Series)	122
TradeReady® Structural Blocking (TDSB)	123

Floor Joist Framing Accessories

Block (TS/CS), Strap (DTN) and EasyClip™ (E- and S- Series™)	124-125
EasyClip™ QuickTwist™ Web Stiffener (QTWS)	126
Web Stiffener (WS)	127
Simpson® Tension Bracing (TB27)	128
TradeReady® Structural Blocking (TDSB)	128

Floor Joist Hangers and Connectors

Simpson® (SJCT) 8-14 Hanger.....	129
Simpson® Bridle Hanger (SLBV/SMB).....	130
Simpson® Ledger Connector System (ICFL)	131
Simpson® Skewable Angle Hangers (SLS5/SLS7)	132
Lateral Tie Plate (LPT4)	133
Foundation Clips (FDCL).....	134





FLOOR FRAMING OVERVIEW

Light-gauge C-Studs/Joists are commonly used in floor framing assemblies. C-Joists are a cost-effective alternative to open web trusses, bar joists, engineered lumber, and cast-in-place or hollow-core floor assemblies. Light steel framing (C-Joists) are ideal for low- and mid-rise commercial applications such as hotels, motels, apartment complexes, condominiums, multi-family, and assisted living. Steel joists are also being used more extensively in residential structures.

Steel's high strength-to-weight ratio provides strong loading capacity and maximum spanning capability. Joists are commonly spaced at 12", 16", 19.2" or 24" intervals and are used in conjunction with all traditional flooring materials such as plywood, OSB, concrete filled steel deck, or one of the many varieties of fiber reinforced cement board.

Dietrich offers a variety of floor framing systems including conventional C-Joist and the TradeReady® Steel Joist System. The TradeReady® Steel Joist System features large extruded openings in the joist to accommodate electrical, mechanical, plumbing and technology lines. The system also includes a tabbed rim track to strengthen the joist against web crippling loads, and to provide greater versatility and strength for ledger applications. This system, in conjunction with other floor sheathing products, provides one of the most cost-effective systems for non-combustible low and mid-rise structures.



Floor Joist Systems/ Components

Floor joist components are available in a variety of web sizes, flanges, gauges and yield strengths. This wide selection of webs, flanges, gauges and yield strengths (ksi) enable the designer to obtain optimal performance at economical prices.

Dietrich's conventional C-Joist system is made up of joists, track, clips, web stiffeners, solid blocking and strapping to complete an entire assembly.

The revolutionary TradeReady® Floor System is comprised of the TradeReady® Joist with large extruded holes, TradeReady® Rim Joist with pre-punched layout tabs and embedded stiffening ribs, and pre-cut structural blocking. The system is complemented with EasyClip™ S- and E-series™ clips and web stiffeners when necessary.

Floor Joist Framing Accessories

Dietrich Metal Framing offers a wide selection of floor framing accessories to ensure maximum floor performance. Choose from our wide assortment of web stiffeners, blocking, bracing and strapping.

Floor Joist Hangers and Connectors

Dietrich's wide assortment of hangers and connectors gives you the flexibility to choose from a variety of products that provide connection solutions to complex framing details. Choose from our universal joist, bridle, skewable and ICF hangers.



The Dietrich TradeReady® Floor System

Use instead of wood joists.

- Long-term price stability.
- Steel is recycled – saves trees.
- Eliminates floor squeak complaints.

Prespaced joist tabs.

- No layout required.
- Eliminates joist hangers.

Greater spanning capabilities.

- Design flexibility.
- Wider O.C. spacing requires fewer joists.
- Wide flange for plywood attachment.
- Structural blocking prevents racking.

Prepunched openings.

- No drilling or cutting joist webs.
- Increases ceiling height.
- Eliminates soffit framing.



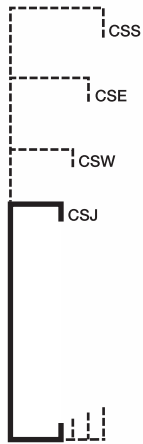
U.S. Patent Nos. 6,301,854; 6,418,694; 6,691,478 and other U.S. and foreign patents pending.

Conventional C-Joist components provide a lightweight, low-cost, rigid floor assembly.

- Precut to exacting sizes and readily available.
- Joist sizes include 8", 10", 12" and 14".
- Available in 18, 16, 14 and 12 gauge.
- Flange widths include 1-5/8", 2", 2-1/2" and 3".



C-Joist

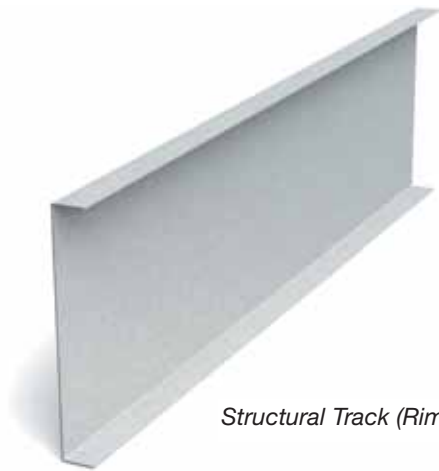


Dietrich C-Joist components provide an economical, lightweight alternative to open web trusses, bar joists, engineered lumber, cast-in-place or hollow core floor assemblies. Depending on loads and spans, C-Joists are typically spaced at 12", 16", 19.2" or 24" on-center spacing. Structural track (TSB), usually in the same gauge as the joist, is used as rim or band enclosures. Joist to girder attachments are normally supported with joist hangers, EasyClip™ E-Series™ or S-Series™ support clips. Web stiffeners may be required at supports and other point loads. Solid blocking and strap bridging is required to properly brace the floor assembly.

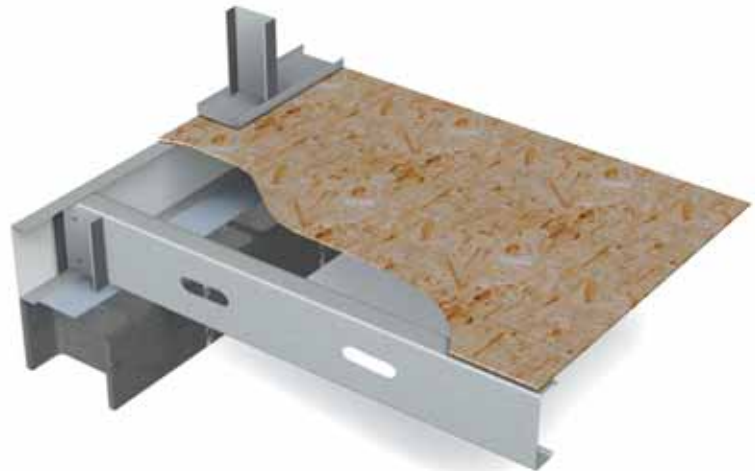
Light-Gauge C-Joist Framing (CS/TS Series™)

DMF Product Code*	SSMA Reference	Thickness Gauge (mils)	Depth		Flange		Return	
			Inches	mm	Inches	mm	Inches	mm
CSJ	800S162-x	18 (43)	8	203	1-5/8	41.3	1/2	12.7
	1000S162-x	16 (54)	10	254	1-5/8	41.3	1/2	12.7
	1200S162-x	14 (68)	12	305	1-5/8	41.3	1/2	12.7
	1400S162-x	12 (97)	14	356	1-5/8	41.3	1/2	12.7
CSW	800S200-x	18 (43)	8	203	2	50.8	5/8	15.9
	1000S200-x	16 (54)	10	254	2	50.8	5/8	15.9
	1200S200-x	14 (68)	12	305	2	50.8	5/8	15.9
	1400S200-x	12 (97)	14	356	2	50.8	5/8	15.9
CSE	800S250-x	18 (43)	8	203	2-1/2	63.5	5/8	15.9
	1000S250-x	16 (54)	10	254	2-1/2	63.5	5/8	15.9
	1200S250-x	14 (68)	12	305	2-1/2	63.5	5/8	15.9
	1400S250-x	12 (97)	14	356	2-1/2	63.5	5/8	15.9
CSS	800S300-x	18 (43)	8	203	3	76.2	1	25.4
	1000S300-x	16 (54)	10	254	3	76.2	1	25.4
	1200S300-x	14 (68)	12	305	3	76.2	1	25.4
	1400S300-x	12 (97)	14	356	3	76.2	1	25.4

*18-gauge is standard as 33 ksi yield strength. 16, 14, 12-gauge are standard as 50 ksi yield strength.
x= SSMA reference of mils at the end of the character string.



Structural Track (Rim)



Structural Track (TS-Series™)

DMF Product Code*	SSMA Reference	Thickness Gauge (mils)	Depth		Flange	
			Inches	mm	Inches	mm
TSB	800T125-x	18 (43)	8	203	1-1/4	31.8
	1000T125-x	16 (54)	10	254	1-1/4	31.8
	1200T125-x	14 (68)	12	305	1-1/4	31.8
	1400T125-x	12 (97)	14	356	1-1/4	31.8

18-gauge is standard as 33 ksi yield strength. 16, 14 and 12-gauge are standard as 50 ksi yield strength.

*The depth of TSB is measured to the inside of the flanges.

x= SSMA reference of mils at the end of the character string.

Next-generation, high-performance TradeReady® Steel Joists are the premier floor joist system for both commercial and residential framing.



- Clear spans up to 33'.
- Large extruded openings to accommodate electrical, HVAC, plumbing and technology lines.
- Hole sizes range from 4-1/4" oval to 10" round based on member depth.
- Superior strength permits wider O.C. spacing.
- Pre-cut to your exact specifications—no waste.
- Available in 7-1/4", 8", 9-1/4", 10", 11-1/4", 12" and 14" deep members.
- Flange sizes include 1-3/4" and 2".
- Eliminates soffit framing.
- UL** Listed assemblies L564, G535, G536, G551, G553 and G560.

TradeReady® Joists



Dietrich TradeReady® steel joists are one of the primary components that make up the TradeReady® floor system. These joists feature large extruded holes that accommodate HVAC, mechanical, plumbing and sprinkler runs. The joist also features a series of smaller holes for electrical and technology lines.

Dietrich TradeReady® steel joists are precision manufactured from corrosion-resistant galvanized steel. Steel joists offer consistent quality, predictable performance and high strength to weight ratio, and they are dimensionally stable. They won't expand, contract or shrink; they won't warp, crack or twist. Steel joists integrate easily with other building materials such as structural steel, concrete, ICF and wood construction.

Joists can be ordered in standard lengths or to your exact specifications to minimize waste. Consult the Dietrich Technical Design Guide or the TradeReady® Steel Joist Design Guide for physical and structural properties, span charts and loading data.



TradeReady® Steel Joist (TD Series™)

DMF Product Code*	Thickness Gauge (mils)	Depth		Flange		Return	
		Inches	mm	Inches	mm	Inches	mm
TDJ3 (18 gauge) TDJ5 (16, 14 & 12 gauge)	18(43) 16(54), 14(68), 12(97)	7-1/4	184	1 3/4	44.5	5/8	15.9
		8	203	1 3/4	44.5	5/8	15.9
		9-1/4	235	1 3/4	44.5	5/8	15.9
		11-1/4	286	1 3/4	44.5	5/8	15.9
TDW3 (18 gauge) TDW5 (16, 14 & 12 gauge)	18(43) 16(54), 14(68), 12(97)	10	254	2	50.8	5/8	15.9
		12	305	2	50.8	5/8	15.9
		14	356	2	50.8	5/8	15.9

*18-gauge is standard as 33 ksi yield strength. 16,14 and 12 gauge are standard as 50 ksi yield strength.

**UL and UL Classified are trademarks of Underwriter's Laboratories, Inc.

TradeReady® Steel Joists (TDJ and TDW Series™)



TradeReady® Steel Joists (TDJ and TDW Series™) and TradeReady® Grommets (TDGR)

TradeReady™ Joist (TD-Series™)

Hole Size Inches	Hole Size mm	Hole Shape	Web Width Inches	Web Width mm
4-1/4" x 7"	108 x 178		7-1/4" TDJ 8" TDJ	184 TDJ 203 TDJ
6-1/4" x 9"	159 x 229		9-1/4" TDJ 10" TDW 11-1/4" TDJ	235 TDJ 254 TDW 286 TDJ
8" Diam.	203		12" TDW	305 TDW
10" Diam.	254		14" TDW	356 TDW

TradeReady® Grommet protects and isolates electrical wiring.

- Snaps quickly into TradeReady® 12" TDW joist (all gauges)
- Provides 360° cable protection
- Simplifies cable pull through
- Delivers compliance with NEC Article 300.4(B)(1) and CEC Rule 12-516
- Aids in the separation of cables to prevent bundling
- Ideal for ROMEX®/ NM type cables:
6/2, 6/3, 8/2, 8/3, 10/2, 10/3, 12/2, 12/3, 14/2, 14/3, etc...



TradeReady® Grommet

TradeReady® Grommets are used in construction anytime it is required by building code to protect electrical wiring. The grommet is specially designed for the 12" TradeReady® Floor Joist System.

TradeReady® Grommets (TDGR)

DMF Product Code	Pcs/Box	Weight/Box	
		lbs	kg
TDGR	36	12	5.44

UL Pending



DIETRICH
METAL FRAMING
A Worthington Industries Company

Next-generation TradeReady® Rim has preformed tabs at standard spacings for rapid and easy installation of TradeReady® Steel Joists.

- Rims have preformed tabs at 12", 16", 19.2" or 24" intervals that eliminate layout.
- Eliminates or drastically reduces support clips, joist hangers and web stiffeners.
- Standard 16' lengths.
- Sizes include 7-1/4", 8", 9-1/4", 10", 11-1/4", 12" and 14".



TradeReady® Rim



Dietrich TradeReady® rim is another major component of the TradeReady® steel floor system. The rim is an integral part of the system and drastically reduces framing time and effort. Rims have preformed attachment tabs at 12", 16", 19.2" or 24" O.C. spacing to eliminate layout time. The tabs are also prepunched to ensure fast, accurate and proper fastener placement. Embossed stiffening ribs on each side of the preformed tabs provide additional reinforcement, resulting in a significant reduction of web stiffeners (squash blocks) and support clips in a majority of applications. Once rims are installed, simply tilt up the floor joist, abut to the tab and screw attach.

U.S. Patent Nos. 6,301,854; 6,691,478; 6,418,694 and other patents pending.

TradeReady® Rim (TD-Series™)

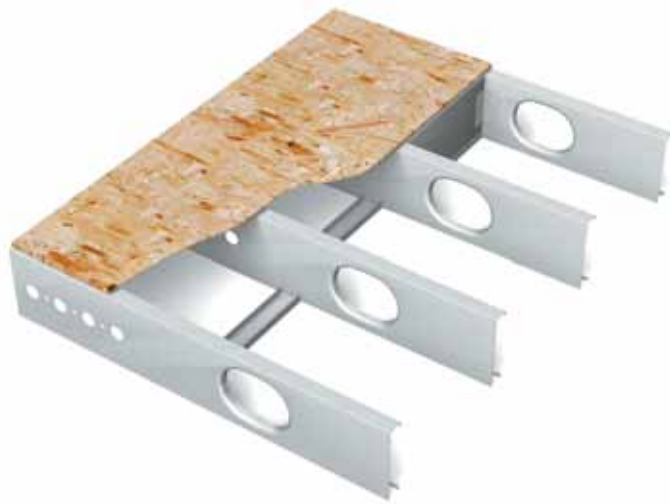
DMF Product Code	Thickness Gauge (Mils)	Depth		Flange Length				Tab Spacing	
		Inches	mm	Top		Bottom		Inches	mm
				Inches	mm	Inches	mm		
TD12	18(43) 16(54) 14(68) 12(97)	7-1/4	184	1-1/4	31.8	2-1/2	63.5	12	305
		8	203	1-1/4	31.8	2-1/2	63.5	12	305
		9-1/4	235	1-1/4	31.8	2-1/2	63.5	12	305
		10	254	1-1/4	31.8	2-1/2	63.5	12	305
		11-1/4	286	1-1/4	31.8	2-1/2	63.5	12	305
		12	305	1-1/4	31.8	2-1/2	63.5	12	305
		14	356	1-1/4	31.8	2-1/2	63.5	12	305
TD16	18(43) 16(54) 14(68) 12(97)	7-1/4	184	1-1/4	31.8	2-1/2	63.5	16	406
		8	203	1-1/4	31.8	2-1/2	63.5	16	406
		9-1/4	235	1-1/4	31.8	2-1/2	63.5	16	406
		10	254	1-1/4	31.8	2-1/2	63.5	16	406
		11-1/4	286	1-1/4	31.8	2-1/2	63.5	16	406
		12	305	1-1/4	31.8	2-1/2	63.5	16	406
		14	356	1-1/4	31.8	2-1/2	63.5	16	406
TD19	18(43) 16(54) 14(68) 12(97)	7-1/4	184	1-1/4	31.8	2-1/2	63.5	19.2	488
		8	203	1-1/4	31.8	2-1/2	63.5	19.2	488
		9-1/4	235	1-1/4	31.8	2-1/2	63.5	19.2	488
		10	254	1-1/4	31.8	2-1/2	63.5	19.2	488
		11-1/4	286	1-1/4	31.8	2-1/2	63.5	19.2	488
		12	305	1-1/4	31.8	2-1/2	63.5	19.2	488
		14	356	1-1/4	31.8	2-1/2	63.5	19.2	488
TD24	18(43) 16(54) 14(68) 12(97)	7-1/4	184	1-1/4	31.8	2-1/2	63.5	24	610
		8	203	1-1/4	31.8	2-1/2	63.5	24	610
		9-1/4	235	1-1/4	31.8	2-1/2	63.5	24	610
		10	254	1-1/4	31.8	2-1/2	63.5	24	610
		11-1/4	286	1-1/4	31.8	2-1/2	63.5	24	610
		12	305	1-1/4	31.8	2-1/2	63.5	24	610
		14	356	1-1/4	31.8	2-1/2	63.5	24	610

TradeReady® Rim is only available in 16' stock lengths.

Precut structural blocking that installs easily to the underside of the joists to prevent joist rotation.



- Pre-cut to fit 12", 16", 19.2" or 24" spacing.
- Pre-punched holes for quick attachment.
- Available in 18 gauge only.



Structural Blocking

TradeReady® Structural Blocking (TDSB)

Dietrich TradeReady®, structural blocking is the third component of the TradeReady® steel floor system. Structural blocking is pre-cut to fit securely between the underside of the floor joists to prevent joist rotation. Structural blocking is an economical alternative to cross bracing, X-bracing or strapping. A continuous row of blocking should be installed every 8' O.C. maximum and staggered for easy attachment.

Caution: In order to prevent joist rolling, the TDSB blocking must be tied into the structure or otherwise braced against lateral movement.

Note: TDSB blocking is not required if sheathing is applied to the joists top and bottom.



TradeReady® Structural Blocking (TDSB)

DMF Product Code	Thickness	Depth		Effective Length	
	Gauge (Mils)	Inches	mm	Inches	mm
TDSB	18(43)	2-1/2	63.5	12	305
TDSB	18(43)	2-1/2	63.5	16	406
TDSB	18(43)	2-1/2	63.5	19.2	488
TDSB	18(43)	2-1/2	63.5	24	610

Block and strap bridging is used to prevent joist rotation and lateral movement.

- Install immediately after joists are erected and before construction loads are applied.
- Solid blocking is field cut from track or joist sections.
- EasyClip™ E-Series™ clips are used to attach blocks to open side of C-Joist.
- EasyClip™ S-Series™ clips are used to attach blocking to solid side of C-Joist.



EasyClip™ S-Series™



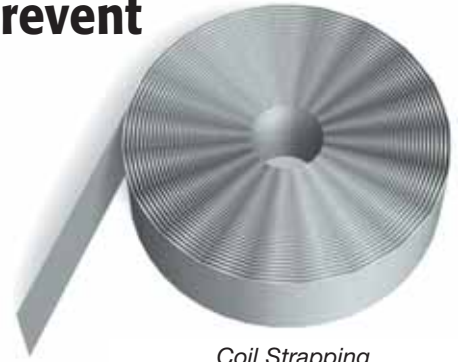
EasyClip™ E-Series™

Dietrich block and strap bridging is installed to prevent joist rotation and lateral movement. Solid blocking, a field-cut track or joist section, is welded or screw-attached between the first and last two outer joist bays and at a maximum of 8' O.C. along

the strap, over all interior supports and adjacent to floor openings. Two-inch wide corrosion resistant strapping is also screw-attached or welded to the bottom of every joist flange. Lateral support on the top flanges is usually provided by sub floor or deck material.

Spacing of bridging must be calculated based on the required strength. In general, bridging is installed at a maximum of 8' O.C. spacing perpendicular to the joists. For example, an 18' joist span would require two bridging runs at 6' O.C. spacing.

Where the sub-floor or decking does not provide lateral support, strap must also be installed on the top flange of the joist.



Coil Strapping



Diagonal Tension Strapping (DTN-Series™/Strap)

DMF Product Code	Thickness				Size Available				Length		Packaging Pcs/Skid
	Gauge	Mils	Design Thickness		Min. Width		Max. Width		ft	m	
			Inches	mm	Inches	mm	Inches	mm			
DTN3	20	33	0.0346	0.879	2	50.8	12	305	10	3.05	200
	18	43	0.0451	1.146	2	50.8	12	305	10	3.05	200
DTN5	16	54	0.0566	1.438	2	50.8	12	305	10	3.05	200
	14	68	0.0713	1.811	2	50.8	12	305	10	3.05	200
	12	97	0.1017	2.583	2	50.8	12	305	10	3.05	200

DTN3 has a yield strength of 33,000 psi.
DTN5 has a yield strength of 50,000 psi.
Packaging may vary by region.

Block (TS/CS), Strap (DTN) and EasyClip™ (E- and S-Series™)

EasyClip™ Support Clips (E-Series™)

DMF Product Code	Thickness				Size		Weight/Piece		Packaging
	Gauge	Mils	Design Thickness		Inches	mm	lbs	kg	Pcs/ Bucket
			Inches	mm					
E543	16	54	0.0566	1.438	4 x 1-1/2 x 3	102 x 38.1 x 76.2	0.270	0.122	100
E545	16	54	0.0566	1.438	4 x 1-1/2 x 5	102 x 38.1 x 127	0.440	0.199	100
E547	16	54	0.0566	1.438	4 x 1-1/2 x 7	102 x 38.1 x 178	0.620	0.281	100
E549	16	54	0.0566	1.438	4 x 1-1/2 x 9	102 x 38.1 x 229	0.800	0.362	50
E541	16	54	0.0566	1.438	4 x 1-1/2 x 11	102 x 38.1 x 279	0.970	0.439	50
E683	14	68	0.0713	1.811	4 x 1-1/2 x 3	102 x 38.1 x 76.2	0.330	0.149	100
E685	14	68	0.0713	1.811	4 x 1-1/2 x 5	102 x 38.1 x 127	0.550	0.249	100
E687	14	68	0.0713	1.811	4 x 1-1/2 x 7	102 x 38.1 x 178	0.770	0.384	80
E689	14	68	0.0713	1.811	4 x 1-1/2 x 9	102 x 38.1 x 229	0.990	0.448	50
E681	14	68	0.0713	1.811	4 x 1-1/2 x 11	102 x 38.1 x 279	1.220	0.552	50
E973	12	97	0.1017	2.583	4 x 1-1/2 x 3	102 x 38.1 x 76.2	0.470	0.213	50
E975	12	97	0.1017	2.583	4 x 1-1/2 x 5	102 x 38.1 x 127	0.780	0.353	50
E977	12	97	0.1017	2.583	4 x 1-1/2 x 7	102 x 38.1 x 178	1.090	0.493	50
E979	12	97	0.1017	2.583	4 x 1-1/2 x 9	102 x 38.1 x 229	1.410	0.638	50
E971	12	97	0.1017	2.583	4 x 1-1/2 x 11	102 x 38.1 x 279	1.720	0.778	40

EasyClip™ Support Clips (S-Series™)

DMF Product Code	Thickness				Size		Weight/Piece		Packaging
	Gauge	Mils	Design Thickness		Inches	mm	lbs	kg	Pcs/ Bucket
			Inches	mm					
S543	16	54	0.0566	1.438	1-1/2 x 1-1/2 x 3	38.1 x 38.1 x 76.2	0.140	0.064	400
S545	16	54	0.0566	1.438	1-1/2 x 1-1/2 x 5	38.1 x 38.1 x 127	0.240	0.109	200
S547	16	54	0.0566	1.438	1-1/2 x 1-1/2 x 7	38.1 x 38.1 x 178	0.340	0.154	100
S549	16	54	0.0566	1.438	1-1/2 x 1-1/2 x 9	38.1 x 38.1 x 229	0.430	0.195	100
S541	16	54	0.0566	1.438	1-1/2 x 1-1/2 x 11	38.1 x 38.1 x 279	0.530	0.240	100
S683	14	68	0.0713	1.811	1-1/2 x 1-1/2 x 3	38.1 x 38.1 x 76.2	0.180	0.082	200
S685	14	68	0.0713	1.811	1-1/2 x 1-1/2 x 5	38.1 x 38.1 x 127	0.300	0.136	200
S687	14	68	0.0713	1.811	1-1/2 x 1-1/2 x 7	38.1 x 38.1 x 178	0.420	0.191	100
S689	14	68	0.0713	1.811	1-1/2 x 1-1/2 x 9	38.1 x 38.1 x 229	0.540	0.245	100
S681	14	68	0.0713	1.811	1-1/2 x 1-1/2 x 11	38.1 x 38.1 x 279	0.660	0.299	100
S973	12	97	0.1017	2.583	1-1/2 x 1-1/2 x 3	38.1 x 38.1 x 76.2	0.260	0.118	200
S975	12	97	0.1017	2.583	1-1/2 x 1-1/2 x 5	38.1 x 38.1 x 127	0.430	0.195	150
S977	12	97	0.1017	2.583	1-1/2 x 1-1/2 x 7	38.1 x 38.1 x 178	0.600	0.272	100
S979	12	97	0.1017	2.583	1-1/2 x 1-1/2 x 9	38.1 x 38.1 x 229	0.770	0.349	80
S971	12	97	0.1017	2.583	1-1/2 x 1-1/2 x 11	38.1 x 38.1 x 279	0.940	0.426	70

Diagonal Tension Strapping (DTN-Series™/Coil)

DMF Product Code	Thickness				Size				Packaging
	Gauge	Mils	Design Thickness		Min. Width		Max. Width		Pcs/ Skid
			Inches	mm	Inches	mm	Inches	mm	
DTNC	20	33	0.0346	0.879	2	50.8	12.0	304.8	1 coil
	18	43	0.0451	1.146	2	50.8	12.0	304.8	1 coil
	16	54	0.0566	1.438	2	50.8	12.0	304.8	1 coil
	14	68	0.0713	1.811	2	50.8	12.0	304.8	1 coil
	12	97	0.1017	2.583	2	50.8	12.0	304.8	1 coil

20 and 18 gauge are 33,000 psi yield strength.
16, 14 and 12 gauge are 50,000 psi yield strength.

Block (TS/CS), Strap (DTN) and EasyClip™ (E- and S-Series™)

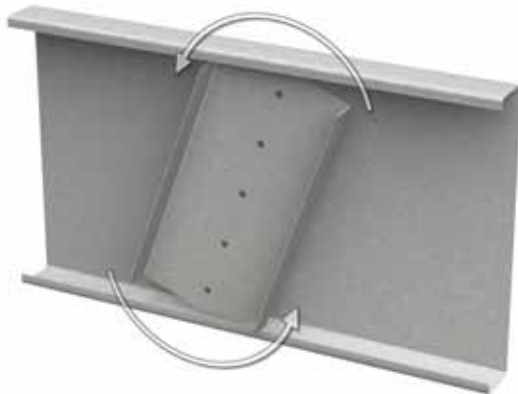
EasyClip™ Quick Twist Web Stiffeners provide excellent reinforcement at critical load points to prevent web crippling.

- Simple, post installation assembly.
- Easily rotated in-place for a tight fit.
- Pre-punched for easy installation of fasteners.
- Solid 12 gauge construction.
- One-piece assembly.



QTWS

EasyClip™ Quick Twist Web Stiffeners (QTWS) are used to provide reinforcement of joist webs to prevent crippling. Web reinforcement is often required by design to enhance the load capacity of joists. The unique design of QTWS allows the installer to insert the stiffener on the inside of the joist **after** the joist is installed. This stiffener eliminates the need to pre-insert traditional web stiffeners prior to joist installation.



EasyClip™ Quick Twist Web Stiffener (QTWS)

DMF Product Code	Size (inches)	Thickness				Size*		Weight/pc		Packaging
		Gauge	Mils	Design Thickness		Inches	mm	lbs	kg	
				Inches	mm					
QTWS	3-1/2	12	97	0.1017	2.583	7.25	184.2	1.190	0.539	Packaged Dependent On Order Quantity
						8.00	203.2	1.320	0.599	
						9.25	235.0	1.530	0.694	
						10.00	254.0	1.660	0.753	
						11.25	285.8	1.880	0.853	
						12.00	304.8	2.000	0.907	
QTWS	6	12	97	0.1017	2.583	7.25	184.2	1.690	0.767	Packaged Dependent On Order Quantity
						8.00	203.2	1.870	0.848	
						9.25	235.0	2.170	0.984	
						10.00	254.0	2.350	1.066	
						11.25	285.8	2.660	1.207	
						12.00	304.8	2.840	1.288	
						14.00	355.6	3.320	1.506	

*Dimension is nominal size. Actual product is shorter to fit inside joist.

EasyClip™ Quick Twist™ Web Stiffener (QTWS)

Provides excellent reinforcement at critical load points to prevent web crippling.

- Prevents web crippling.
- Significantly enhances joist carrying capacity.
- Available in 14 gauge only.

Dietrich web stiffeners are used to provide reinforcement of joist webs to prevent crippling. Web reinforcement is often required by design to enhance the load capacity of joists.

When installing between the joist flanges, WS web stiffeners must be installed by sliding it in from the end of the joist. Web stiffeners must be ordered to fit specific joist web dimensions.



Web Stiffener (WS)



Web Stiffener (WS)

DMF Product Code	Gauge	Thickness			Size		Length	
		Mils	Design Thickness		Inches	mm	Inches	mm
			Inches	mm				
WS	14	68	0.0713	1.811	4	102	5-3/4 to 13-3/4	146 to 349

Used in lieu of block and strap to prevent flange rotation and support flanges in compression.

- Eliminates multiple components.
- Fits 1-5/8"–3" flanges.
- Available for 12", 16", 19.2" or 24" O.C. spacing.



Tension Bracing

Simpson* tension bracing is used to prevent joist compression, flange lateral movement, and rotation. These tension ties are used as an alternative to traditional block and strapping. Tension ties are traditionally used with wood framing, but can also be used with conventional C-joists.

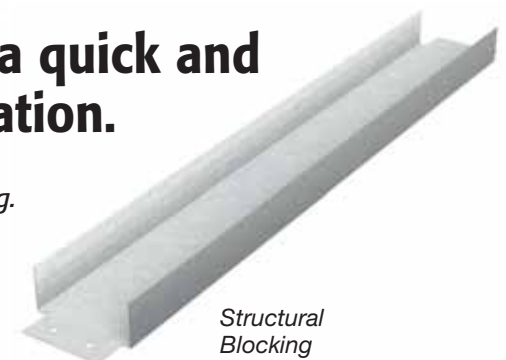
Spacing of tension bracing must be calculated based on needed strength. In general, bracing is installed at 8' O.C. maximum.

* Simpson is a registered trademark of Simpson Strong-Tie Company, Inc.



Pre-cut structural blocking provides a quick and efficient method to prevent joist rotation.

- Economical alternative to strapping, x-bracing or tension bridging.
- Pre-cut to fit 12", 16", 19.2" or 24" spacing.
- Pre-punched holes for quick attachment.
- Available in 18 gauge.



Structural Blocking

Dietrich TradeReady® structural blocking is pre-cut to fit securely between the underside of floor joists to prevent joist rotation. The structural blocking is an economical alternative to cross bracing, x-bracing or strapping. A continuous row of blocking should be installed every 8' O.C. maximum and staggered for easy attachment.

CAUTION: In order to prevent joist rolling, the TDSB blocking must be tied into the structure or otherwise braced against lateral movement.

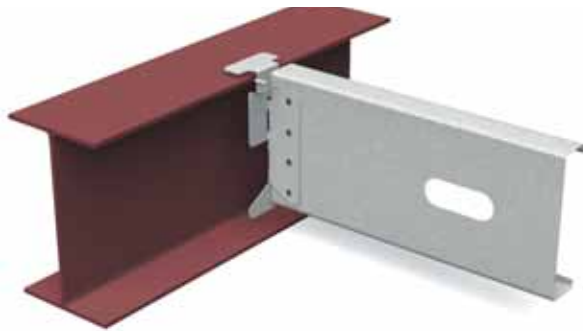
TradeReady® Structural Blocking (TDSB)

DMF Product Code	Thickness	Depth		Effective Length	
	Gauge (mils)	Inches	mm	Inches	mm
TDSB	18 (43)	2 1/2	63.5	12	305
TDSB	18 (43)	2 1/2	63.5	16	406
TDSB	18 (43)	2 1/2	63.5	19.2	488
TDSB	18 (43)	2 1/2	63.5	24	610

Simpson® Tension Bracing (TB27) & TradeReady® Structural Blocking (TDSB)

This premier joist hanger features “one size fits all” flexibility and accommodates 8”–14” deep floor joists.

- One size fits all. Eliminates numerous SKUs.
- Field skewable up to 45°.
- Joists can be attached from either side or doubled up.



SJCT

Simpson® (SJCT) 8–14 Hanger

The Simpson* (S/JCT) joist hanger provides maximum installation flexibility. This universal hanger can be used for 8”–14” deep wood or steel framing members. The hanger is easily field skewable and can accommodate up to 45° attachments. Floor joists can be attached from either side or easily doubled up.

Each hanger is pre-punched with various shaped holes for fast, easy and accurate fastener placement. Round holes are used for minimum loads, and both round and triangle holes are used for maximum loads.

The SJCT joist hanger is typically used to hang joists from wood, glue-lams, light-gauge steel or structural steel I-beams.



Simpson® (SJCT) 8-14 Hanger

DMF Product Code	Simpson™ Reference	Thickness				Weight/Piece		Packaging
		Gauge	Mils	Design Thickness		lbs	kg	Pcs/Box
				Inches	mm			
SJCT	S/JCT8-14	14	68	0.0713	1.811	0.600	0.271	50

* Simpson is a registered trademark of Simpson Strong-Tie Company, Inc.

Traditional hanger used to attach floor joists to structural steel beams.



- Single-and double-wide hangers.
- Stock sizes for 8", 10", 12" and 14" deep joists.
- Other widths and depths available.

Simpson* bridle hangers are commonly used to attach light-gauge C-joists to structural steel beams. Bridle hangers are easily attached with welds.



Bridle Hanger



Photo illustrates SJCT Hanger. Bridle Hanger is an acceptable alternative.

Simpson* Bridle Hanger (SLBV/SMB)

DMF Product Code	Thickness				Depth		Width		Weight/Piece		Packaging Pcs/Box
	Gauge	Mils	Design Thickness		Inches	mm	Inches	mm	lbs	kg	
			Inches	mm							
SLBV	14	68	0.0713	1.811	8	203	2	50.8	1.00	0.452	25
					10	254	2	50.8	1.25	0.566	25
					12	305	2	50.8	1.50	0.679	25
					14	356	2	50.8	2.00	0.905	25
SMB	12	97	0.1017	2.583	8	203	2	50.8	2.00	0.905	25
					10	254	2	50.8	2.25	1.018	25
					12	305	2	50.8	2.50	1.131	25
					14	356	2	50.8	4.00	1.810	25

Double-wide hangers available on request.

∅Other style hangers are available.

*Simpson is a registered trademark of Simpson Strong-Tie Company, Inc.

This specialty hanger provides a quick, easy and versatile method for attaching steel rim joists to insulated concrete forms.

- Cost-effective connector used in ICF construction.
- Anchors securely within the concrete.
- Available in 14 gauge only.



The Simpson* ledger connector system is engineered to solve the challenges of mounting steel or wood ledgers to insulated concrete form (ICF) walls. Simpson's Ledger Connector System is easy, quick and versatile to use. The perforations in the embedded leg of the ICFL permit the concrete to flow around it, anchoring the ICFL securely within the concrete. The exposed flange provides a structural surface for mounting either a wood or steel ledger.



Ledger Connector



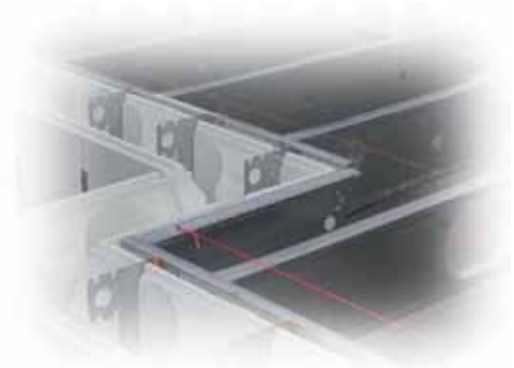
Simpson® Ledger Connector System (ICFL)



Simpson® Ledger Connector System (ICFL)

DMF Product Code	Thickness				Weight/Piece		Packaging
	Gauge	Mils	Design Thickness		lbs	kg	Pcs/Box
			Inches	mm			
ICFL	14	68	0.0713	1.811	1.81	0.82	20

* Simpson is a registered trademark of Simpson Strong-Tie Company, Inc.



Skewable utility angle used for rigid and off-angle attachments of joists to joists or other structural steel members.



- Adjustable from 0° to 135°.
- Bend one time only.
- Available in 18 gauge.
- ICBO ER 5275 recognized.

Simpson* SLS5/SLS7 skewable utility angles are used to make rigid attachments of joist-to-joist or joist-to-other-miscellaneous framing. This clip is ideal for making off-angle attachments. It is easily field bent from 0° to 135°.

CAUTION: This clip can only be bent one time.



SLS7



SLS5



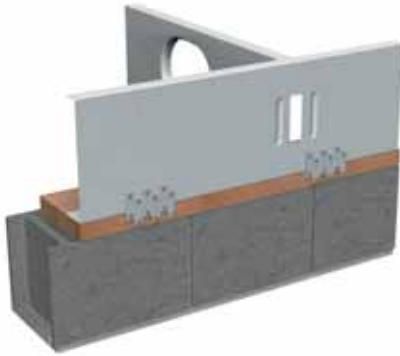
Simpson® Skewable Angle Hangers (SLS5/SLS7)

DMF Product Code	Thickness				Size		Weight/Piece		Packaging
	Gauge	Mils	Design Thickness		Inches	mm	lbs	kg	Pcs/Box
			Inches	mm					
SLS5	18	43	0.0451	1.146	4-7/8	124	0.300	0.136	100
SLS7	18	43	0.0451	1.146	6-3/8	162	0.400	0.181	50

*Simpson is a registered trademark of Simpson Strong-Tie Company, Inc.

The LTP4 Lateral Tie Plate transfers shear forces from the joist rim or blocking to the sill plate.

- Prepunched holes for connection accuracy.
- ICBO ER 5670 recognized.



The Simpson* LTP4 Lateral Tie Plate transfers shear forces from the joist rim or blocking to the sill plate. Nail holes are spaced to prevent wood splitting for single and double top plate applications. May be installed over plywood sheathing.



Lateral Tie Plate



Lateral Tie Plate (LTP4)



Lateral Tie Plate (LTP4)

DMF Product Code	Thickness				Height		Width		Weight/Piece		Packaging Pcs/Box
	Gauge	Mils	Design Thickness		Inches	mm	Width	mm	lbs	kg	
			Inches	mm							
LTP4	20	33	0.0346	0.879	3	76.2	4-1/4	108	0.110	0.050	200

*Simpson is a registered trademark of Simpson Strong-Tie Company, Inc.

Used to secure TradeReady® Rim, structural track, end caps or parallel joists to the building foundation.

- Pre-punched for easy and accurate fastener placement.
- Elongated slot provides for adjustable attachment to the foundation anchor bolts.
- 16 gauge, G 90, 50 ksi steel.



Dietrich Foundation Clips are used to provide a strong, rigid attachment of TradeReady® Rim or conventional structural track to the building foundation. Foundation clips are secured to the foundation using the elongated slots, and anchor bolts. The pre-punched leg is screw attached to the face or web of the joist. Clip spacing is based on loading requirements.



Foundation Clip



Foundation Clips (FDCL)

DMF Product Code	Thickness				Width		Height		Length		Weight/Piece		Packaging
	Gauge	Mils	Design Thickness		Inches	mm	Inches	mm	Inches	mm	lbs	kg	Pcs/Box
			Inches	mm									
FDCL	16	54	0.0566	1.438	5	127	5-1/2	140	5	127	0.900	0.407	80